



24 Golding Crescent
Earls Barton, Northamptonshire

oriordanbond
TOWN & COUNTRY



24 Golding Crescent

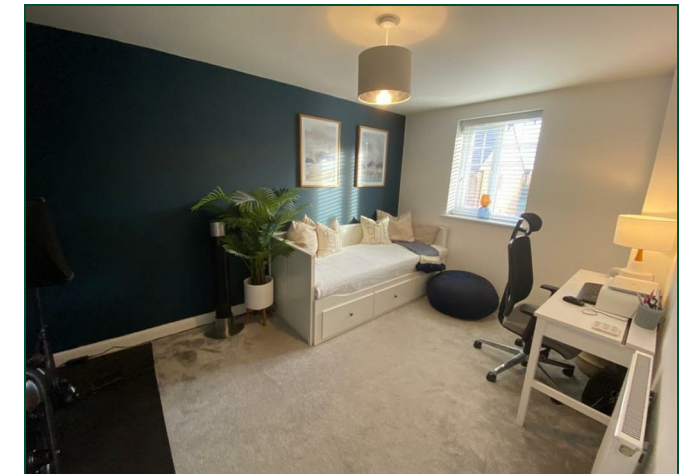
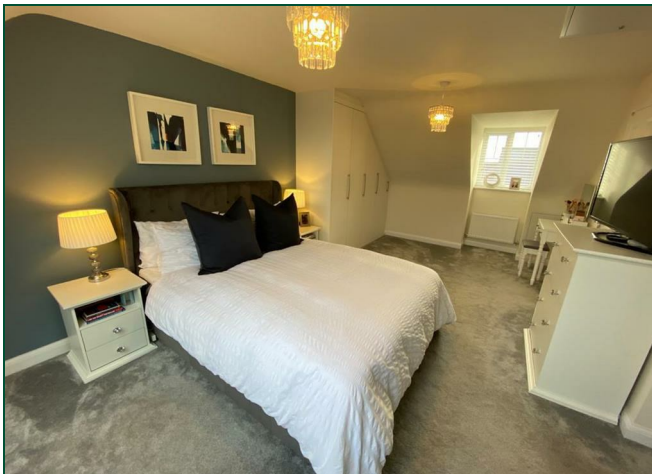
Earls Barton
NN6 0FT

£320,000

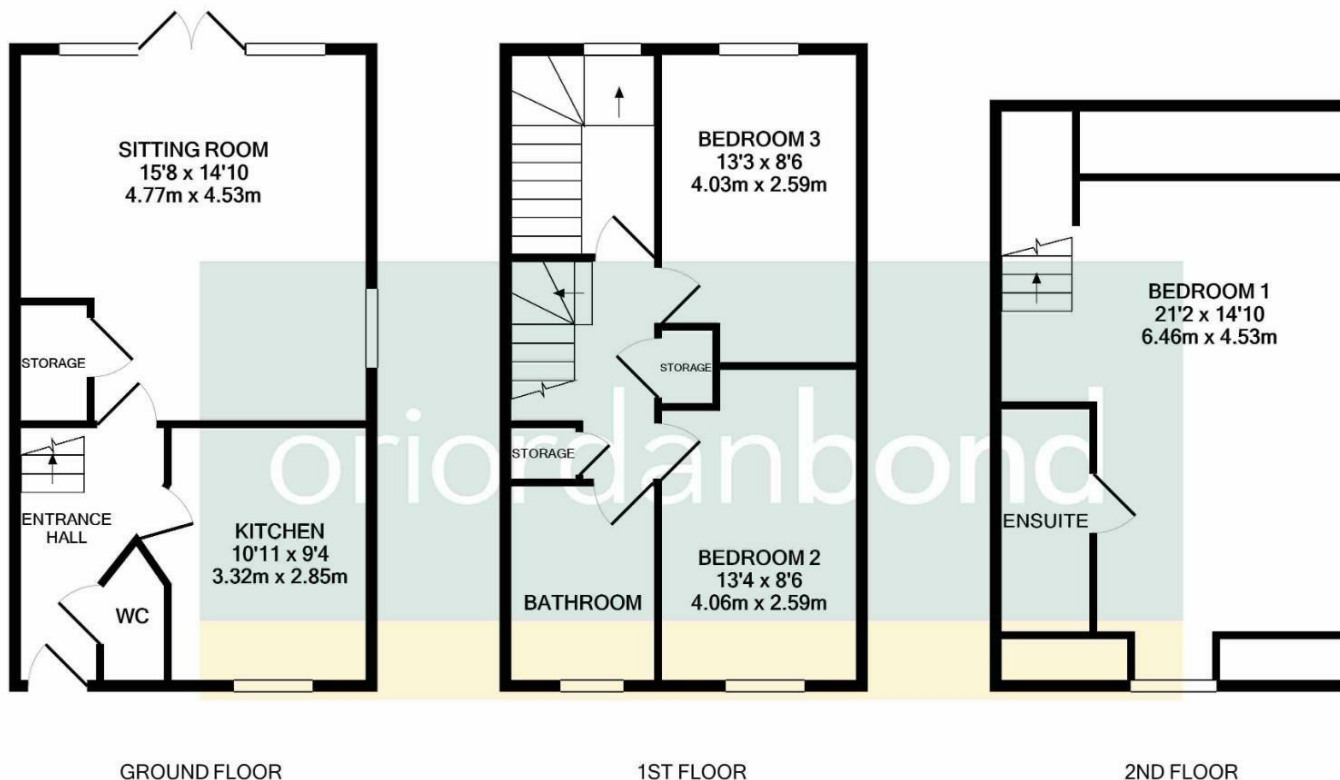
A spacious three bedroom semi detached property located on the popular 'Wickets Development' within the popular village of Earls Barton. This stunning home is arranged over three floors.

Entrance hall, cloakroom/WC, kitchen with integrated appliances, open plan sitting/dining room, two first floor bedrooms and family bathroom and second floor master bedroom suite with en-suite shower room. Outside is an enclosed landscaped rear garden and low maintenance frontage with driveway to side providing off road parking. Further benefits include gas radiator heating, high performance glazing and remaining NHBC warranty cover. (A/1151/M)

- Three bedroom three storey semi detached home
- En-suite to master bedroom
- Fitted kitchen with integrated appliances
- Gas radiator heating
- Enclosed landscaped rear garden
- Off road parking







TOTAL APPROX. FLOOR AREA 1151 SQ.FT. (106.9 SQ.M.)

Whilst every attempt has been made to ensure the accuracy of the floor plan contained here, measurements of doors, windows, rooms and any other items are approximate and no responsibility is taken for any error, omission, or mis-statement. This plan is for illustrative purposes only and should be used as such by any prospective purchaser. The services, systems and appliances shown have not been tested and no guarantee as to their operability or efficiency can be given
Made with Metropix ©2021



Additional information

- Council Tax Band: C
- Energy Efficiency Rating: B

Viewing

Viewing strictly by appointment – details below

Disclaimer

O'Riordan Bond Estate Agents Limited has not tested apparatus, equipment, fittings or services and so cannot verify they are in working order. The buyer is advised to obtain verification from their solicitor or surveyor.

O'Riordan Bond Earls Barton Sales

01604 810088

earlsbarton@oriordanbond.co.uk